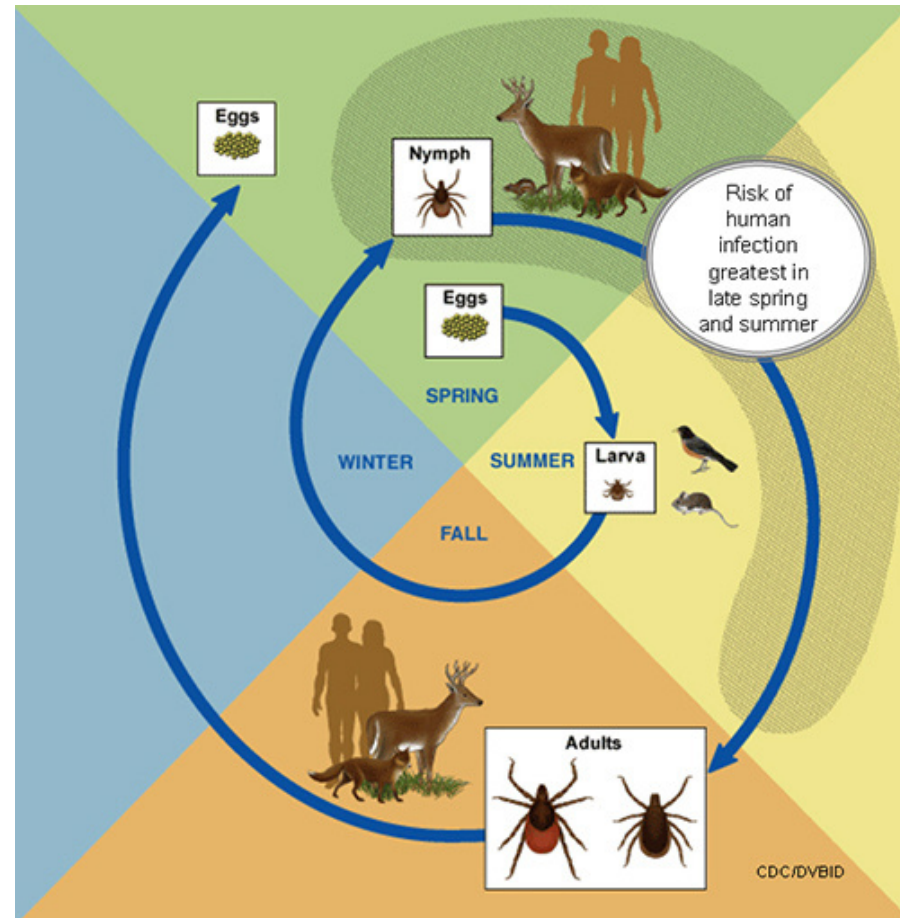


## DESIGN AND PLANT TO REPEL TICKS

Ticks wait for a host, resting on the tips of grasses and shrubs, holding onto leaves and grass by their lower legs. Their upper pair of legs are outstretched, waiting to climb onto a passing host. When a host brushes the spot where a tick is waiting, it quickly climbs aboard and finds a suitable place to bite.

- make sure your dog is on a preventative medication.
- minimize tall or mid-sized grasses; always keeping grass short.
- remove overhanging bushes. Ticks don't jump but can be encountered by brushing against branches or by having them drop down onto a pet walking beside or under the plant.
- Control white tail deer, chipmunks and other rodents to help limit ticks.

## LIFE CYCLE OF A TICK AND HOW IT AFFECTS ANIMALS AND HUMANS



Creating a better life for  
animal companions and those who love them.